

Passalid Beetles (Coleoptera, Passalidae) Collected from Northern  
Myanmar, with New Records of *Ceracupes chingkini*  
and *Tiberioides borealis*<sup>1)</sup>

**Masahiro KON**

School of Environmental Science, The University of Shiga Prefecture,  
Hassaka-cho, Hikone, 522–8533 Japan,

**Masahiro TANAKA**

3–10–7 Mikatadai, Nishi-ku, Kobe, 651–2277 Japan,

**Kunio ARAYA**

Graduate School of Human and Environmental Studies, Kyoto University,  
Yoshida, Sakyo, Kyoto, 606–8501 Japan

and

**Yukinobu NOSE**

12–40, Toyotsu-cho, Suita, Osaka, 564–0051 Japan

**Abstract** Fourteen species of passalid beetles are recorded from northern Myanmar. Of these, *Ceracupes chingkini* OKANO and *Tiberioides borealis* (ARROW) are recorded for the first time from Myanmar. The male genitalia are firstly described and illustrated for *Tiberioides borealis* and *T. kuwerti*.

Sixteen passalid species have been recorded from Myanmar (HINCKS & DIBB, 1935, 1958; BOUCHER, 1998). However, no additional record has so far been made from Myanmar since ARROW (1950) with the exception of BOUCHER (1998).

Recently, we had an opportunity to examine a series of specimens of the Passalidae from northern Myanmar and recognized 14 species, of which *Ceracupes chingkini* OKANO and *Tiberioides borealis* (ARROW) are recorded from Myanmar for the first time. We record herewith the materials and describe the male genitalia for the genus

---

1) This study was supported in part by the Grants-in-Aids from the Ministry of Education, Science and Culture, Japan (Nos. 10041166, 09839030, 09740639).

*Tiberioides* for the first time. We adopt the terminology of LINDROTH (1957) in the description of male genitalia and refer to HINCKS and DIBB (1935, 1958) and some subsequent works for the distribution of each species.

#### Subfamily Aulacocyclinae

##### *Ceracupes fronticornis* (WESTWOOD)

*Passalus fronticornis* WESTWOOD, 1842, Ann. Mag. nat. Hist., **8**, p. 124.

*Specimens examined.* 2 ♂♂, Kalar dap, 2,000 m alt., north to Putao, Myanmar, 19–VI–1995; 1 ♀, ditto, 2,310 m alt., 22–VI–1995; 1 ♂, Taundam, 1,200 m alt., ditto, 6–VI–1995; 1 ♂, 1 ♀, ditto, 29–V–1995; 1 ♀, north to Putao, ditto, 26–VII–1997; 1 ♂, Gorei, ditto, 9–IX–1997; 1 ♂, Kanlanpu, ditto, 12–IX–1998.

*Distribution.* Eastern Himalayas, Myanmar, Indochina.

##### *Ceracupes chingkini* OKANO

*Ceracupes chingkini* OKANO, 1988, Entomo Shirogane, **1**, p. 2.

*Specimen examined.* 1 ♀, Kalar dap, 2,315 m alt., north to Putao, Myanmar, 22–VI–1995.

*Distribution.* Myanmar (new record), Indochina, China (Guangxi), Taiwan.

##### *Taeniocerus mourzinei* BOUCHER

*Taeniocerus mourzinei* BOUCHER, 1998, Bull. Soc. ent. Fr., **103**, p. 460.

*Specimen examined.* 1 ♂, Nitadi, 1,375–1,520 m alt., north to Putao, Myanmar, 6–VII–1998.

*Distribution.* Myanmar.

#### Subfamily Passalinae

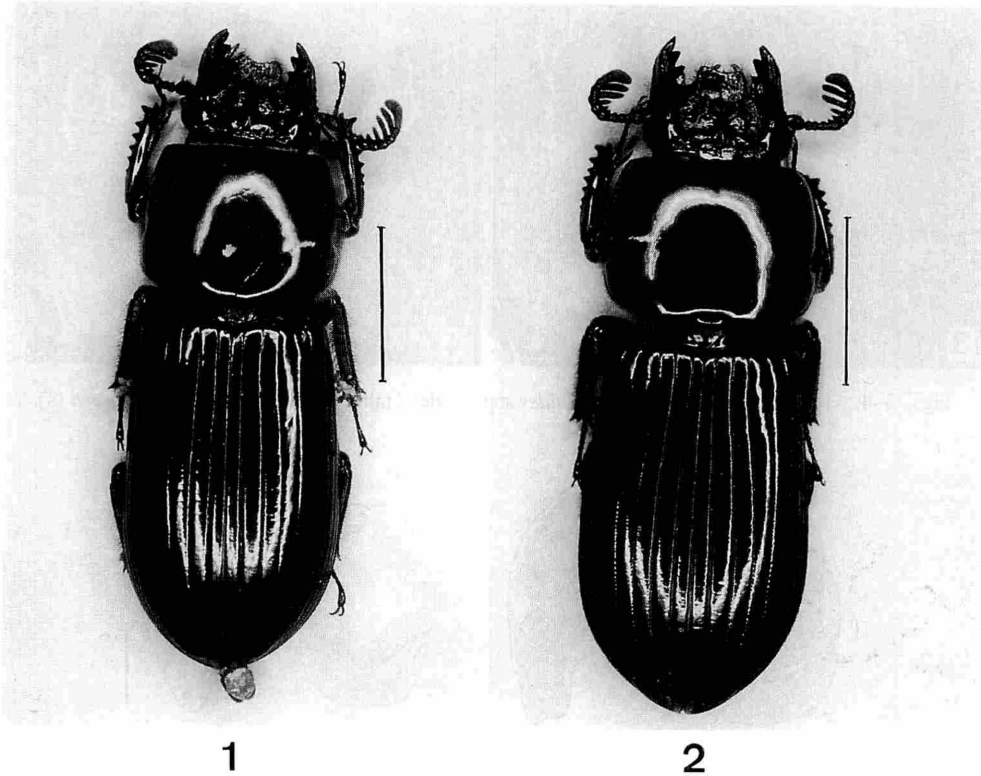
##### *Tiberioides borealis* (ARROW)

(Figs. 1, 3, 5–6)

*Chilomazus borealis* ARROW, 1907, Trans. ent. Soc. London, **1906**, p. 467.

*Brief description.* Mentum with transverse carina in postero-central portion, the carina gently bimodal, weakly swollen at the middle of antero-central portion (Fig. 3). Side of elytron shining; lateral grooves of elytron narrow, with simple punctures.

Penis of male genitalia large, with a longitudinal membranous area along the middle line on ventral side, the area not broadened proximally in ventral view; parameres united on ventral side, as long as basal piece at middle in ventral view, distal margin gently curved in ventral view, latero-proximal end pointed proximally like a hook; dis-



Figs. 1–2. Habitus of *Tiberioides* spp. (scale: 10 mm); *T. borealis*, male (1), and *T. kuwertii*, female (2).

tal margin of basal piece gently curved in ventral view, lateral margins divergent distally (Figs. 5–6).

*Specimens examined.* 1 ♂, Gorlay, north to Putao, Myanmar, 25–VII–1993; 1 ♀, Taundam, ditto, 14–VI–1997; 1 ♂, Gorei, ditto, 8–VI–1997; 1 ♂, north to Putao, ditto, 9–VI–1997; 1 ♂, ditto, 21–V–1997; 1 ♂, Namzel, 760 m alt., ditto, 16–IX–1998.

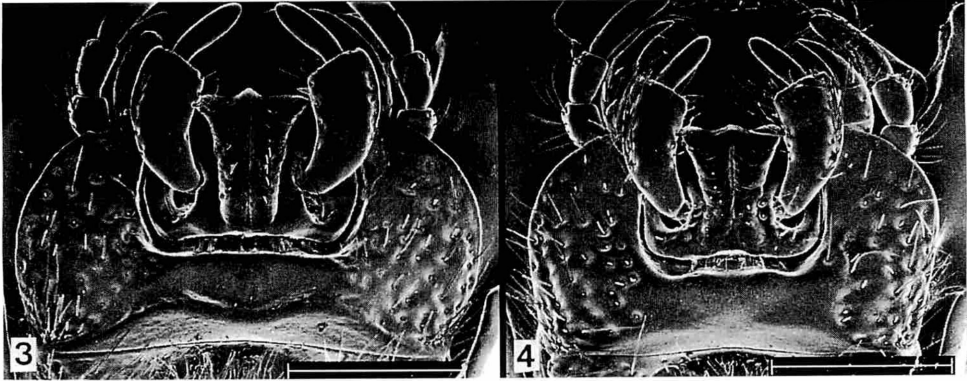
*Distribution.* Assam, Myanmar (new record).

*Notes.* This species was described by ARROW (1907) based on a single specimen from Assam under the name of *Chilomazus borealis*. GRAVELY (1918) transferred it to the genus *Tiberioides* and illustrated the mentum of the holotype. Later, ARROW (1950) redescribed it based on the holotype. However, no additional specimen has been recorded so far. This is a new record of this species from Myanmar.

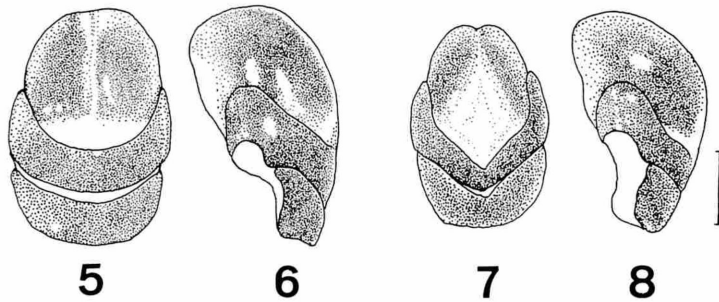
***Tiberioides kuwertii* (ARROW)**

(Figs. 2, 4, 7–8)

*Tiberius kuwertii* ARROW, 1907, Trans. ent. Soc. London, 1906, p. 446.



Figs. 3–4. Ligula and mentum of *Tiberioides* spp. (scale: 2 mm); *T. borealis* (3), and *T. kuwerti* (4).



Figs. 5–8. Male genitalia of *Tiberioides* spp. (scale: 1 mm). 5–6, *T. borealis*, ventral view (5), left lateral view (6). — 7–8, *T. kuwerti*, ventral view (7), left lateral view (8).

*Brief description.* Mentum almost flat in central portion, without transverse carina in postero-central portion (Fig. 4). Side of elytron worn-looking; lateral grooves of elytron broad, with transverse punctures.

Penis of male genitalia large, with a longitudinal membranous area along the middle line on ventral side, the area broadened proximally in ventral view; parameres united on ventral side, shorter than basal piece at middle in ventral view, distal margin V-shaped in ventral view, latero-proximal end weakly pointed proximally; distal margin of basal piece V-shaped in ventral view, lateral margins divergent distally (Figs. 7–8).

*Specimens examined.* 1 ♀, Gorlay, north to Putao, Myanmar, 9–VI–1993; 1 ♂, ditto, 28–VII–1993; 1 ♂, Kacjin, Dazulong, ditto, 18–VII–1995; 1 ♂, Gorei, ditto, 9–IX–1997; 1 ♀, Tasuda, ditto, 25–VIII–1997.

*Distribution.* E. Himalayas, Myanmar.

***Macrolinus sikkimensis*** (STOLICZKA)

*Basilianus sikkimensis* STOLICZKA, 1873, J. Asiat. Soc. Bengal., **42**, p. 161.

*Specimens examined.* 1 ♂, 2 ♀♀, Gorlay, north to Putao, Myanmar, 15–VI–1993; 1 ♂, 1 ♀, Mt. Nwezin, 10 miles northeast to Putao, ditto, 16~20–VI–1998, S. NAGAI leg.

*Distribution.* E. Himalayas, Myanmar, Indochina.

***Ophrygonius birmanicus*** GRAVELY

*Ophrygonius birmanicus* GRAVELY, 1914, Mem. Ind. Mus., **3**, p. 226.

*Specimens examined.* 2 ♂♂, north to Putao, Myanmar, 17–V–1997.

*Distribution.* Myanmar, Indochina.

***Ophrygonius convexifrons*** ZANG

*Basilianus cantori convexifrons* ZANG, 1904, Zool. Anz., **27**, p. 698.

*Specimens examined.* 1 ♂, north to Putao, Myanmar, 14–VI–1997; 3 ♂♂, 1 ♀, ditto, 5–VII–1997; 1 ♂, ditto, 7–III–1997; 1 ♂, 1 ♀, ditto, 17–V–1997; 1 ♂, 1 ♀, Mapanput, ditto, 30–V–1997; 2 ♀♀, Kanrandam, ditto, 23–V–1997; 1 ♀, ditto, 27–V–1997; 1 ♂, north to Putao, Myanmar, 19–VIII–1998; 1 ♂, ditto, 20–VIII–1998; 1 ♂, 1 ♀, ditto, 23–VIII–1998; 1 ♂, ditto, 25–VIII–1998; 2 ♂♂, ditto, 26–VIII–1998.

*Distribution.* Assam, Myanmar, Vietnam.

***Aceraius grandis*** (BURMEISTER)

*Passalus grandis* BURMEISTER, 1847, Handb. Ent., **5**, p. 463.

*Specimens examined.* 1 ♀, Gorlay, north to Putao, Myanmar, 7–VII–1993; 1 ♂, ditto, 15–VII–1993; 1 ♂, 3 ♀♀, Kachin, Shimangan, ditto, 7–VI–1995; 1 ♀, Magwza, 550 m alt., ditto, 22–IX–1998; 7 ♂♂, Mt. Nwezin, 10 miles northeast to Putao, ditto, 16~20–VI–1998, S. NAGAI leg.

*Distribution.* E. Himalayas, Myanmar, Indochina, China, Taiwan, Malay Peninsula, Sumatra, Java, Borneo, Philippines.

***Aceraius helferi*** KUWERT

*Aceraius helferi* KUWERT, 1891, Dt. ent. Z., **1891**, p. 163.

*Specimen examined.* 1 ♂, Gorlay, north to Putao, Myanmar, 7–VII–1993; 1 ♀, Namzel, north to Putao, ditto, 16–IX–1998.

*Distribution.* E. Himalayas, Myanmar, Indochina, Malay Peninsula, China.

***Leptaulax bicolor*** (FABRICIUS)

*Passalus bicolor* FABRICIUS, 1801, Syst. Eleuth., **2**, p. 256.

*Specimens examined.* 1 ♂, Taundam, north to Putao, Myanmar, 14–VI–1997; 1 ♀, Kushin, ditto, 29–VII–1996; 2 ♂♂, 1 ♀, Mt. Nwezin, 10 miles northeast to Putao, ditto, 16–20–VI–1998, S. NAGAI leg.

*Distribution.* Sri Lanka, India, E. Himalayas, Myanmar, Indochina, China, Malay Peninsula, Sumatra, Java, Borneo, Philippines, Sulawesi, Moluccas, New Guinea, Australia.

***Leptaulax cyclotaenius*** KUWERT

*Leptaulax cyclotaenius* KUWERT, 1891, Dt. ent. Z., **1891**, p. 188.

*Specimens examined.* 1 ♀, Dong Litukup, northeast to Putao, Myanmar, 21–V–1998; 1 ♀, Mt. Nwezin, 10 miles northeast to Putao, ditto, 16–20–VI–1998, S. NAGAI leg.

*Distribution.* E. Himalayas, Myanmar, Thailand, Vietnam, Cambodia, Malay Peninsula, Sumatra, Borneo, Sulawesi.

***Leptaulax dentatus*** (FABRICIUS)

*Passalus dentatus* FABRICIUS, 1792, Ent. Syst., **1(2)**, p. 241.

*Specimens examined.* 2 ♂♂, north to Putao, Myanmar, 19–V–1997.

*Distribution.* India, E. Himalayas, Myanmar, Indochina, China, Taiwan, Malay Peninsula, Sumatra, Java, Borneo, Philippines, Sulawesi, Moluccas, New Guinea, Australia.

***Leptaulax roepstorfi*** KUWERT

*Leptaulax roepstorfi* KUWERT, 1898, Novit. zool., **5**, p. 288.

*Specimens examined.* 3 ♂♂, 1 ♀, Mt. Nwezin, 10 miles northeast to Putao, Myanmar, 16–20–VI–1998, S. NAGAI leg.

*Distribution.* E. Himalayas, Myanmar, Andaman Is.

In closing this report, we express our hearty thanks to Nyi SHWIN, K. HAYASHI, S. NAGAI and Lanwan people for collecting the series of specimens and various cooperation, and to S. BOUCHER, the Muséum national d'Histoire naturelle, Paris, for literature.

## 要 約

近 雅博・田中正浩・荒谷邦雄・野瀬幸信：ミャンマー北部から採集されたクロツヤムシ，*Ceracupes chingkini* OKANOと*Tiberioides borealis* (ARROW)の新記録。—— ミャンマーから採集さ

れたクロツヤムシ 14 種を記録した。そのうち, *Ceracupes chingkini* OKANO および *Tiberioides borealis* (ARROW) は, 初めてミャンマーから記録された。 *T. borealis* と *T. kuwerti* (ARROW) の雄交尾器を初めて記載し図示した。

### References

- ARROW, G. J., 1907. A contribution to the classification of the Coleoptera family Passalidae. *Trans. ent. Soc. London*, **1906**: 441–469.
- 1950. Coleoptera, Lamellicornia, Lucanidae and Passalidae, vol. IV. *In the: Fauna of India Including Pakistan, Ceylon, Burma and Malaya*. Taylor & Francis, London.
- BOUCHER, S., 1998. Une nouvelle espèce de *Taeniocerus* du nord Myanmar confondue avec *T. bicuspis* (KAUP, 1868) (Coleoptera, Passalidae). *Bull. Soc. ent. Fr.*, **103**: 457–461.
- GRAVELY, 1918. A contribution towards the revision of the Passalidae of the world. *Mem. Ind. Mus.*, **7**: 1–144.
- HINCKS, W. D., & J. R. DIBB, 1935. Passalidae. *In* JUNK, W., & S. SCHENKLING (eds.), *Coleopterorum Catalogus*, pars 142: 1–118. W. JUNK, Berlin.
- & ——— 1958. Passalidae. *In* HINCKS, W. D. (ed.), *Coleopterorum Catalogus Supplementa*, pars 142: 1–32. W. JUNK, Berlin.
- LINDROTH, C. H., 1957. The principal terms used for male and female genitalia in Coleoptera. *Opusc. ent., Lund*, **22**: 241–256.